

Micromotor Systems



Micromotor Systems

Designed to Meet Your Needs

Our micromotor systems utilize cutting-edge technology to meet or exceed the standards of professionals who demand accuracy, speed, and ease of use. Select between brushless and brush-style versions as well as rotary-only or systems which include a variety of head choices and reciprocation. Whether you are polishing, drilling, cutting, finishing, or grinding, our diverse selection of micromotor systems ensure you will find the perfect fit for your needs.



Power Hand 3 Controller Specifications

Designed with the latest technology in micromotor systems, the Power Hand 3 can handle almost any finishing job. This interchangeable system allows the operator to choose from a selection of motors and heads to create the right tool for various polishing applications. With the quick disconnect feature, the operator can switch heads within seconds.



Forward/Reverse button

To control the rotational direction for each motor. LED light indicates rotational direction.

Optional PH2X Handpieces

Our previous Power Hand 2X handpieces with three-prong plugs will connect directly to the controller. RPM display, load indicator, and error code message will not be displayed.

Optional Variable Speed Foot Rheostat

Now with the Auto Cruise feature, it is possible to set a fixed speed with the optional foot pedal, allowing the operator to free their foot from the pedal.

Load Indicator

8 steps of LED lights from green to yellow to red. The display lights up when too much force is applied. For the best results and long life, stay within the green.



Digital Rotation Display

2-digit display for easy adjustment of rotation speed. Dialing in the exact RPM for each tool ensures optimal performance.



Error Code

Displays an error message for easy troubleshooting due to heat build-up, overloading the handpiece, or a defective motor cord.



Description	SKU	Price
PH3 Controller, 115V	5103300	\$510
PH3 Controller, 230V	5103302	\$510

Power Hand 3 Rotary Handpiece Specifications

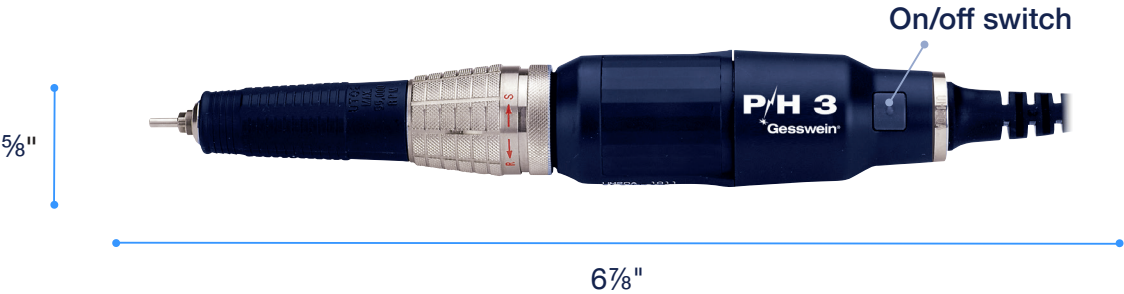
Choose from six sturdy, true-running, well-balanced handpieces with powerful 30V DC air-cooled motors. The improved motor design increases torque by 20% and increases airflow to keep handpieces cool. They operate with minimal vibration and have flexible power cords for easy reach. All handpieces have a quick tool change feature and a new on/off switch located on the motor. All six handpieces are two-piece construction and can accept various power hand attachments. Supplied with 3/32" and 1/8" collets, collet wrenches, and replacement motor brushes.

High-Torque Rotary Handpieces

Designed to handle the toughest jobs. These workhorses have the highest torque rating. Use for hand grinding, heavy deburring, cutting, polishing, and finishing all types of materials.

Weight: 9.74 oz.

Description	Speed	Torque (N-cm)	SKU	Price
08X	1,000-8,000rpm	9.8	5103310	\$775
15X	1,000-15,000rpm	8.8	5103320	\$775
30X	1,000-30,000rpm	6.8	5103340	\$775

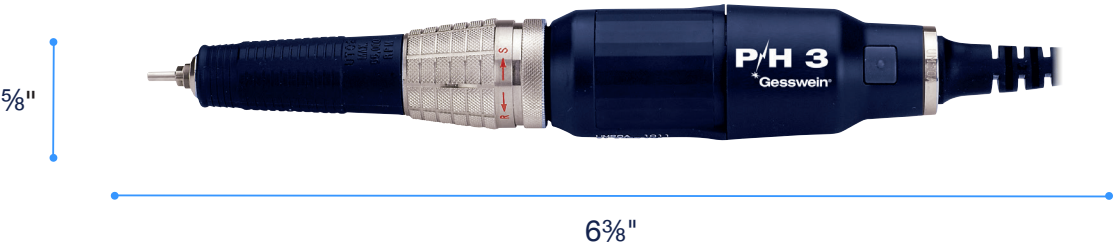


Standard Handpieces

These handpieces are smaller and lighter in weight compared to the high-torque handpieces. They fit comfortably in the hand and are well suited for continuous use for general-purpose grinding and polishing.

Weight: 7.76 oz.

Description	Speed	Torque (N-cm)	SKU	Price
20X	1,000-20,000rpm	6.4	5103330	\$775
35X	1,000-35,000rpm	5.4	5103350	\$775

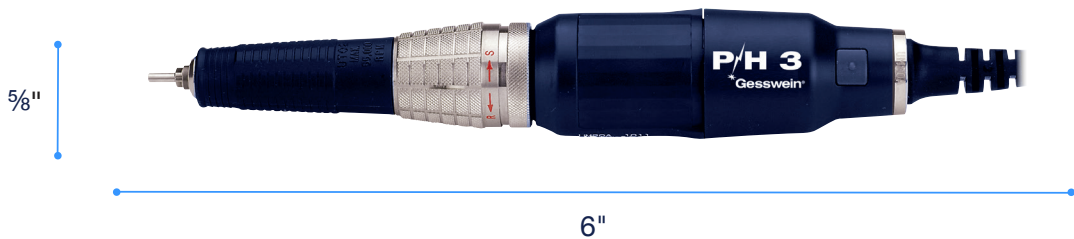


High-Speed Handpiece

The lightest, fastest, and most comfortable of our straight rotary handpieces. Use for precision work at high speeds.

Weight: 6.70 oz.

Description	Speed	Torque (N-cm)	SKU	Price
55X	1,000-55,000rpm	3.6	5103370	\$775



Power Hand 3 Rotary Kits

Start with these money-saving kits. includes Power Hand 3 controller (115V) and handpiece of your choice.

Description	SKU	Price
PH3 Controller with 8X Handpiece	5103390	\$1,210
PH3 Controller with 15X Handpiece	5103391	\$1,210
PH3 Controller with 20X Handpiece	5103392	\$1,210
PH3 Controller with 30X Handpiece	5103393	\$1,210
PH3 Controller with 35X Handpiece	5103394	\$1,210
PH3 Controller with 55X Handpiece	5103396	\$1,210



Power Hand 3 Motor Specifications

Purchase a motor separately to construct your own Power Hand 3 tool. All Power Hand 3 rotary handpieces are two-part design so heads and motors can be switched to create new combinations to best suit your particular job. All motors feature a convenient on/off switch. RPM speed is indicated on the motor casings. Supplied with a pair of replacement motor brushes.

High-Torque Motors

Weight: 6.2 oz.

Description	Speed	Max. Torque (Ncm)	SKU	Price
M-08X	1,000-8,000rpm	9.8	5103311	\$438
M-15X	1,000-15,000rpm	8.8	5103321	\$438
M-30X	1,000-30,000rpm	6.8	5103341	\$438



Standard Motors

Weight: 4.25 oz.

Description	Speed	Max. Torque (Ncm)	SKU	Price
M-20X	1,000-20,000rpm	6.4	5103331	\$438
M-35X	1,000-35,000rpm	5.4	5103351	\$438



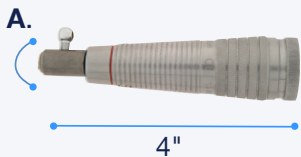
High-Speed Motor

Weight: 3.2 oz.

Description	Speed	Max. Torque (Ncm)	SKU	Price
M-55X	1,000-55,000rpm	3.6	5103371	\$438

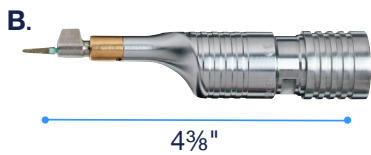


Power Hand 3 Head Attachment Specifications



A. SZX Swing Head - For use with M-08X motor only

Description	Max. Strokes/Min.	SKU	Price
Swing Head	8,000	5102256	\$510



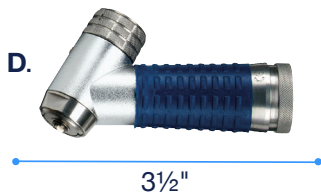
B. Mini Filer Heads - For best results use with M-08X motor

Fixed Stroke Length	Max. Strokes/Min.	SKU	Price
0.5mm	12,000	5102266	\$773.58
1.0mm	12,000	5102264	\$773.58
1.5mm	12,000	5102265	\$773.58



C. Standard Head - For use with all motors

Description	Max. RPM	SKU	Price
Z-STX	55,000rpm	5102200	\$335



D. Contra-Angle Head - For use with M-08X and M-15X motors only

Description	Max. RPM	SKU	Price
Z-CNX Contra-Angle Head	15,000rpm	5102200	\$335



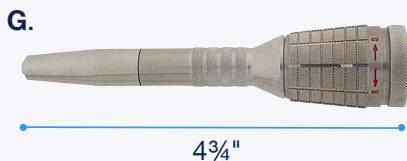
E. Right-Angle Head - For use with M-08X and M-15X motors only

Description	Max. RPM	SKU	Price
Z-ANX Right-Angle Head	15,000rpm	5102240	\$407



F. Heavy-Duty Head - For use with all motors, except M-35X or M-55X

Description	Max. RPM	SKU	Price
Z-HDX	30,000rpm	5102230	\$411



G. Slender Head - For use with all motors

Description	Max. RPM	SKU	Price
Z-SLX	55,000rpm	5102220	\$411

Power Hand Profilers & Belt Sander Specifications

Power Hand Z-2X and Z-6X Reciprocating Profilers

Both Z-2X and Z-6X provide standard back-and-forth reciprocating action. They hold 1.5 to 6.35mm (1/4") diameter tools. Secured tools can float freely and be fixed at any position through 360°. Z-2X has a maximum of 7,020 SPM. Z-6X has a maximum of 4,200 SPM.

Weight: 24oz.

Description	Stroke Length	SKU	Price
Z-2X	0-22mm	5102150	\$1,025
Z-6X	0-22mm	5102160	\$1,025
Z-2X with PH3 Controller		5103397	\$1,455
Z-6X with PH3 Controller		5103398	\$1,455



Power Hand BZX Belt Sander

Ideal for a wide variety of precision finishing applications. Use for deburring, and sanding flat and curved surfaces and narrowed slots. Operates with minimal vibration and has flexible power cord for easy reach. Supplied with straight and 45°-angle arms for 6 and 8mm wide abrasive belts. Arms are spring-loaded for rapid belt changes.

Weight: 16oz.

Description	SKU	Price
BZX Belt Sander	5102131	\$1,025
BZX Belt Sander with PH3 Controller	5103400	\$1,445



Power Hand SZX Side-to-Side Profiler

Provides unique side-to-side reciprocating action with adjustable stroke. Perfect for polishing base areas in deep cavities, corners, and deep slots. Helps eliminate rounding of sharp corners. Prevents bottoming out in blind holes. Holds 1.5 to 5mm (3/16") diameter tools.

Weight: 16 oz.

Description	SKU	Price
SZX Profiler	5103309	\$820
SZX Profiler with PH3 Controller	5103389	\$1,260



PH3 Adaptor and Foot Rheostat

Use our PH3 Adapter to connect new Power Hand 3 motors (5-prong plugs) to your older PH2X controllers (3-prong receptacles).

Rather than use the speed regulator on the controller, consider purchasing our Variable Speed Foot Rheostat.

Weight: 16 oz.

	Description	SKU	Price
A.	PH3 Adapter	5103304	\$41
B.	Variable Speed Foot Rheostat (optional)	5103306	\$122



Marathon Handy 700 Brushless Micromotor System Specifications

The Handy 700 system features an advanced controller and a 50,000rpm, 230W brushless rotary handpiece for incredible power – even at low speeds! Provides ample torque at all times to ensure fast and smooth metal removal. Ideal for a variety of applications, including grinding, finishing, and polishing. 100-120V, 40W, 50/60Hz. Backed by a two-year handpiece warranty. CE approved.

Features

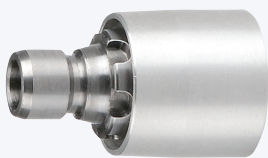
- Full compatibility with Power Hand 3 brush-type handpieces
- Dial or foot rheostat speed control
- Easy-to-read digital speed display for precise speed and torque settings
- Forward/reverse rotation
- Error-checking/troubleshooting system with overload protection

System Includes:

- Handy 700 controller
- BH-60 handpiece with cradle rest
- Variable-speed foot rheostat
- Controller Measures: 5-3/8"W x 9-1/16"D x 7-1/16"H



Description	SKU	Price
Handy 700 System, 1/8" Collet	5102925	\$799
Handy 700 System, 3/32" Collet	5102920	\$799
Replacement BH-60 Handpiece with 1/8" Collet	5000224	\$572
Replacement BH-60 Motor only	5000225	\$412



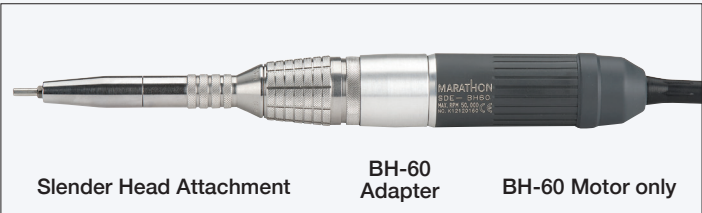
Increase the versatility of your Handy 700.

BH-60 Motor Adapter

This easy-to-use motor adapter connects PH3 head attachments to the BH-60 Handpiece.

Description	SKU	Price
BH-60 Motor Adapter	5000223	\$170

Possible Configurations



Marathon Micromotor System

Our affordable, do-it-all, Marathon rotary micromotor system performs a wide range of grinding, deburring, and polishing operations. Quick tool changes keep work flowing, increasing production, and saving you time and money. Accommodates our full line of Power Hand 3 handpieces.



Controller Features

- Dial speed control
- Forward/Reverse handpiece direction switch
- Motor overload cutoff switch
- Max power 90W
- Voltage selector switch: 110/220V, 50/60Hz.
- Output voltage: 0-30V DC (continuously variable)

Controller Specifications

- Measures: 4-1/2”W x 5-3/4”D x 3-3/4”H
- Weighs 2.6 lbs.

Handpiece Specifications

- Measures 6” L x 1” to 5/8” Diameter
- Weighs 7.5 oz.

System Includes

- Ergonomic design - fits comfortably in your hand
- Convenient quick-tool-change mechanism
- Flexible phone-type cord.
- 35,000rpm rotary handpiece with cradle rest
- Variable-speed foot rheostat
- Safety glasses

Description	SKU	Price
Marathon System with 1/8” Collet	5102946	\$350
Marathon System with 3/32” Collet	5102956	\$350
Marathon System with 3mm Collet	5102971	\$350
Marathon Controller only	5102960	\$135
PHP35 Handpiece only 3/32” Collet	5105145	\$205
PHP35 Handpiece only 1/8” Collet	5105144	\$205
Variable-Speed Foot Rheostat	5102940	\$62

Maxima NEO Micromotor System

The affordable Maxima NEO is powerful enough for mold polishing and deburring while also precise enough for precision tasks such as dental lab work. Designed with the latest technology, you'll find it is user-friendly and very quiet in operation. Ideal for a variety of applications including grinding, polishing, and finishing. Unit allows quick tool changes and accommodates our full line of Power Hand Handpieces.

Set consists of a controller, handpiece (with a stand, 2 wrenches, set of carbon brushes) and variable foot pedal. Made in South Korea.

Controller Features:

- Max power 50W
- Dial speed control with forward/reverse direction switch
- Overload protection
- Electrical 110/220V, 50/60Hz
- Convenient pause function
- Digital rotation display
- Output Voltage 0-30V DC
- Variable-speed foot rheostat

Controller Specifications:

- Dimensions 3.2"W x 5.95"D x 5.95"H
- Weighs 4.75 lbs.

Handpiece Specifications:

- Measures 6" L x 1" (tapers to 5/8" dia. at finger grip)
- Weighs 5.9 oz without power cord



Description	SKU	Price
Maxima NEO with 1/8" Collet PHP40 Micromotor Set	5105154	\$475

Collets for Straight and Angle Rotary Handpieces

For all Straight and Angle Handpieces except Power Hand Z-HDX Heavy-Duty Head and Micro-Angle Heads.

			
Size	3/32" (2.35mm)	3.00mm	1/8" (3.2mm)
SKU	5010100	5010106	5010105
Price	\$42	\$42	\$42

Reducing Collets

Use the proper reducing collet to convert your standard 1/8", 3mm or 3/32" collet to hold a 3/32" or 1/16" tool shank. Simply slip a reducing collet into the collet on your handpiece to use smaller shanked tools.

					
Size	1/8" to 3/32"	1/8" to 1/16"	3mm to 3/32"	3mm to 1/16"	3/32" to 1/16"
SKU	8161501	8161502	8161504	8161505	8161503
Price	\$16	\$16	\$16	\$16	\$16

Service & Support



Trained Professionals

Our team of sales and service specialists are fully trained on our micromotor systems so we can give you the best quality of service.



Repair Services

We offer in-house repair services on our micromotor systems.



Preventative Maintenance

Simple recommendations are easy to follow to keep your micromotors running problem free for many years to come.



Customer Support

Warranty support for any concerns and follow up consultations are available. Reach out directly to our Micromotor Technician, Lenny Provenzano III.

Kimberly Arnette
Industrial Sales Manager



475.445.5973
karnette@gesswein.com

Pete Jaisaree
Industrial Sales



475.445.5979
pjaisaree@gesswein.com

Michael Dawes
Industrial Sales



475.445.5977
mdawes@gesswein.com

Lenny Provenzano III
Industrial Service Technician



475.445.5976
lprovenzano@gesswein.com